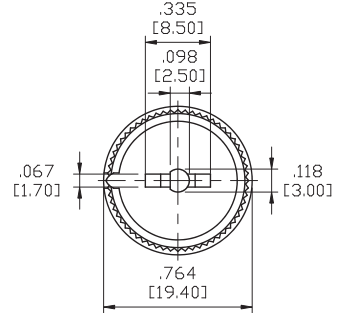
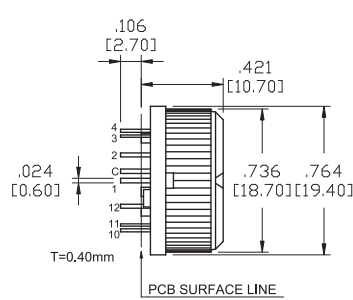
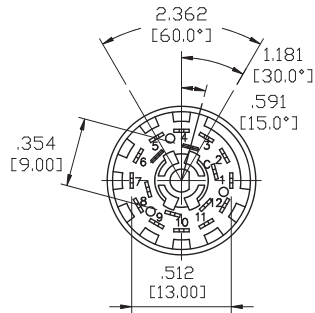
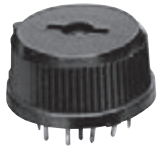


SPECIFICATIONS:

CONTACT RATING: AC/DC 150V 130mA.
 ELECTRICAL LIFE: 15,000 cycles at full load
 CONTACT RESISTANCE: 25mΩ max. initial.
 INSULATION RESISTANCE: 100MΩ max.
 DIELECTRIC STRENGTH: 1,000 V RMS @ sea level.
 OPERATING TEMPERATURE: -30°C to +80°C.
 STOPS: Adjustable 2 through 12 position -30°C indexing.

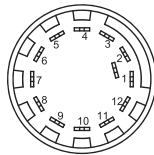
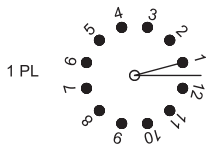
MATERIALS:

SHAFT: Aluminum.
 COVER: PA.
 BASE: PA.
 CONTACTS: PBS+Ag.
 TERMINALS: Brass+Ag.
 MOVEMENT: PA.
 SPRING: SUS.



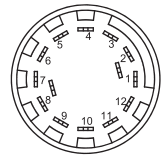
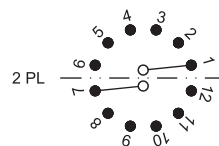
Model No.	Switching Position
8405-1	1P-12Pos

Schematic



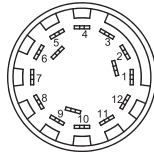
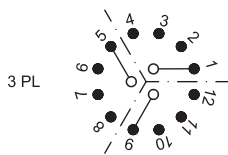
Model No.	Switching Position
8405-2	2P-6Pos

Schematic



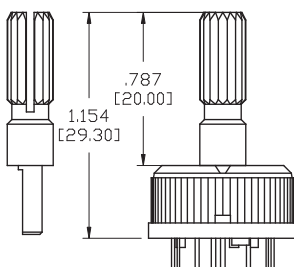
Model No.	Switching Position
8405-3	3P-4Pos

Schematic

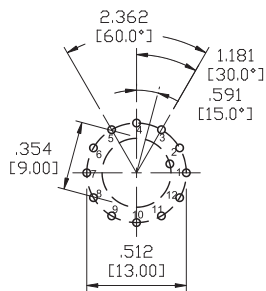


SHAFT OPTIONS

A = With Shaft
 B = Without Shaft



P.C.MOUNTING



8405-1 MODELS



8405-2 MODELS



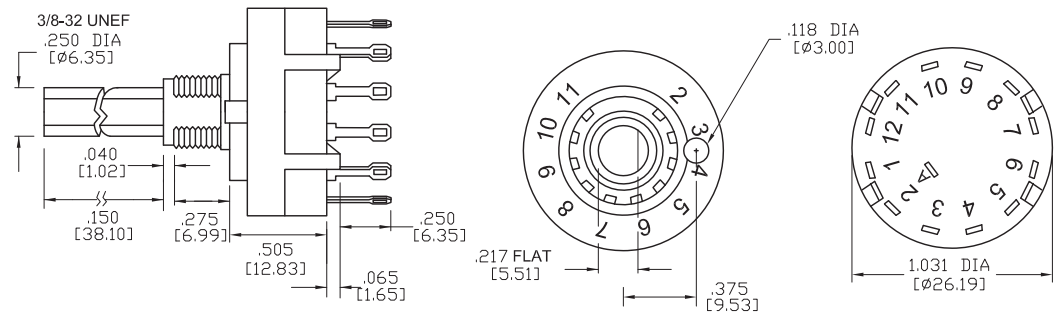
8405-3 MODELS

SPECIFICATIONS:

CONTACT RATING: 300mA @ 125VAC.
 CURRENT CARRYING CAPACITY: 5A continuous. (Non-switching)
 ELECTRICAL LIFE: 15000 cycles at full load up to 30,000 detent operations.
 CONTACT RESISTANCE: 20mΩmax. initial.
 DIELECTRIC STRENGTH: 500 V RMS @ sea level.
 OPERATING TEMPERATURE: -20°C to +85°C.
 STOPS: Adjustable 2 through 12 position -30°C indexing.
 ROTATION TORQUE: 0.5±0.2kg/cm.

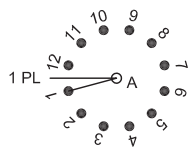
MATERIALS:

SHAFT: Glass filled nylon, color-gray.
 COVER: Glass filled nylon, color-gray.
 BASE: Glass filled nylon, color-gray.
 CONTACTS: Brass, silver plated.
 TERMINALS: Brass, silver plated.
 HARDWARE: Nut-Zinc, nickel plated.
 LOCKWASHER: Steel, bright Zinc plated.
 STOP RING: Brass, nickel plated.

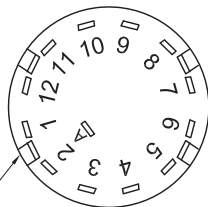


Model No.	Switching Position
8404-1	1P-12Pos

Schematic

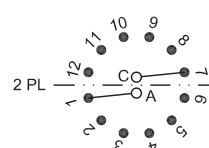


TERM. NOS. MOLDED ON HOUSING

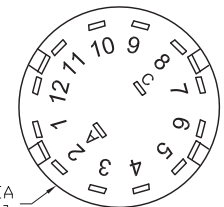


Model No.	Switching Position
8404-2	2P-6Pos

Schematic

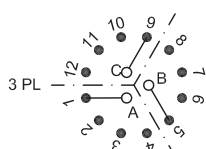


TERM. NOS. MOLDED ON HOUSING

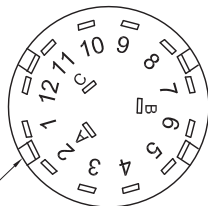


Model No.	Switching Position
8404-3	3P-4Pos

Schematic

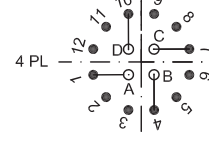


TERM. NOS. MOLDED ON HOUSING

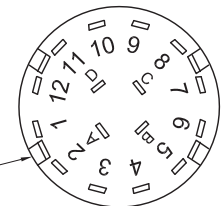


Model No.	Switching Position
8404-4	4P-3Pos

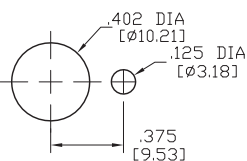
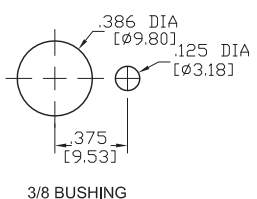
Schematic



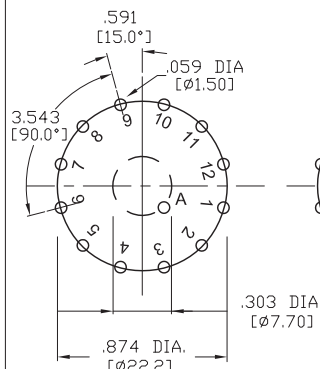
TERM. NOS. MOLDED ON HOUSING



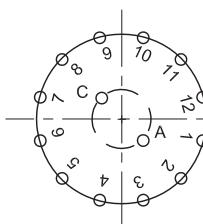
PANEL MOUNTING



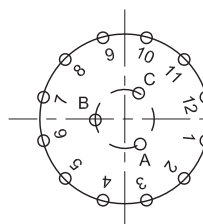
P.C.MOUNTING



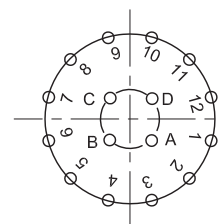
8404-1 MODELS



8404-2 MODELS



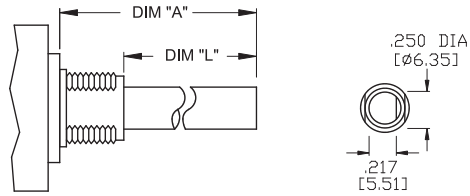
8404-3 MODELS



8404-4 MODELS

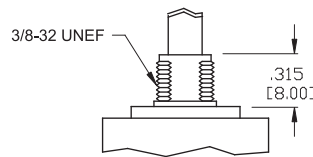
ACTUATOR OPTIONS

Actuator	DIM"A"	DIM"L"
38	1.496 [38.00]	1.181 [30.00]
29	1.142 [29.00]	.827 [21.00]
21	.827 [21.00]	.512 [13.00]
18	.709 [18.00]	.394 [10.00]
15	.591 [15.00]	.276 [7.00]



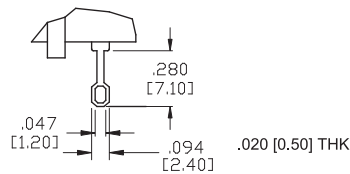
BUSHING OPTIONS

E STD.

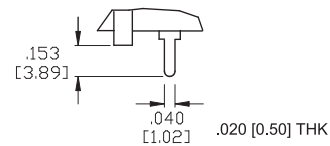


TERMINATION OPTIONS

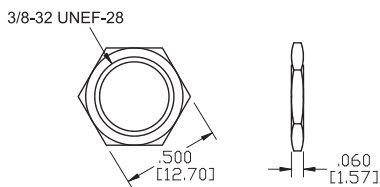
B STD.



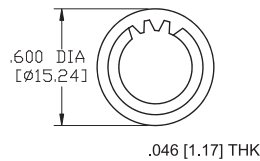
C PRINTED CIRCUIT



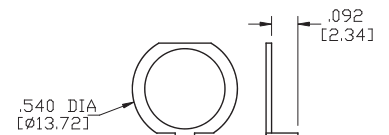
NUT



LOCK WASHER



STOP RING



CONTACT OPTIONS

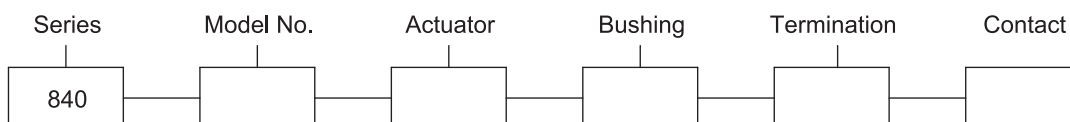
NS STD.

Non-Shorting Contacts: Break before make

SC

Shorting Contacts: Make before break

HOW TO ORDER



Toggle

Rocker

Slide

Pushbutton

AV

Rotary

Tact

Touch Key

Miscellaneous