

SPECIFICATIONS:

CONTACT RATING: Refer to "Contact Material Options" for more info.
 ELECTRICAL LIFE: 30,000 make-and break cycles at full load.
 CONTACT RESISTANCE: 20mΩ max. initial @ 2-4VDC
 100mA for both silver and gold plated contacts.
 INSULATION RESISTANCE: 1,000MΩ min.
 DIELECTRIC STRENGTH: 1500V RMS min. @ sea level.
 OPERATING TEMPERATURE: -30°C to +85°C.

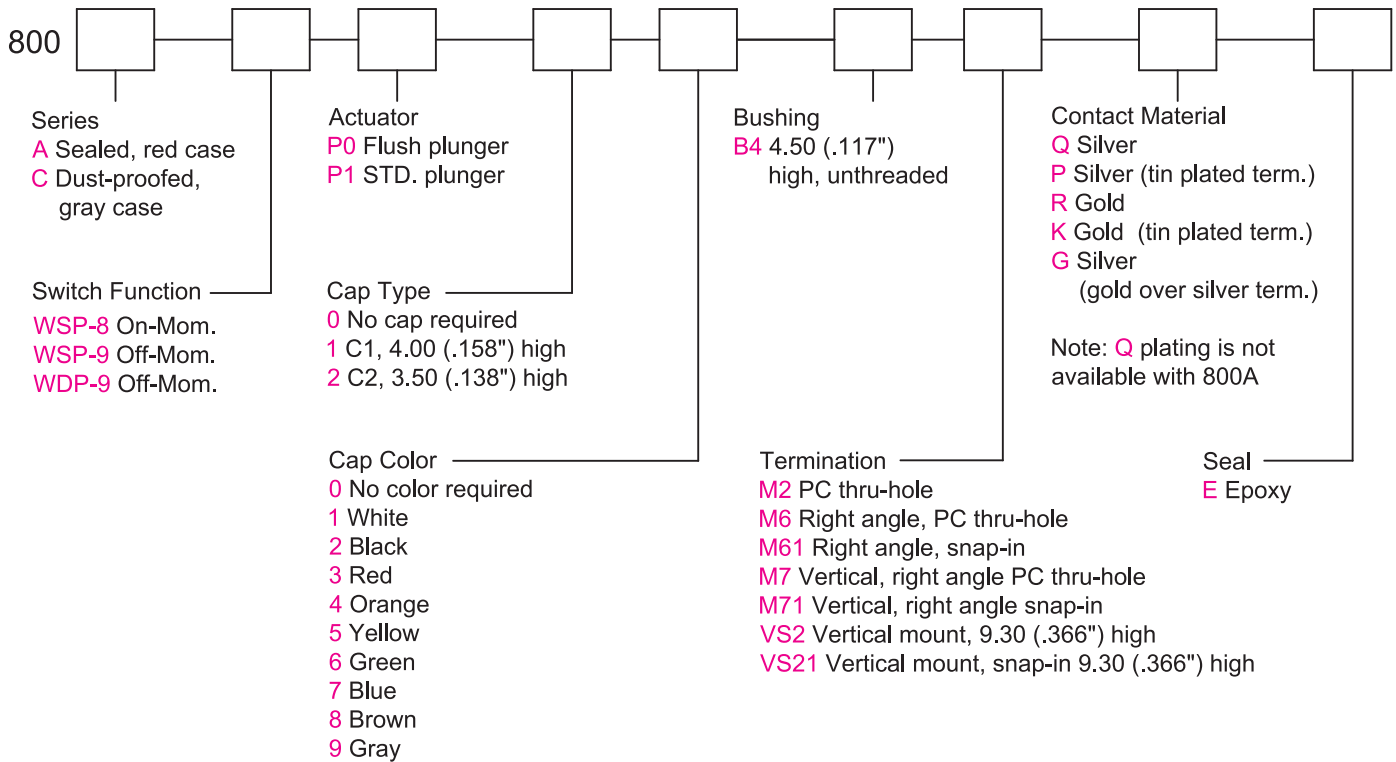
MATERIALS:

CASE & BUSHING: PA9T or FR52, flame retardant, heat stabilized (UL 94V-0).
 PLUNGER: FR52 (UL 94V-0), with internal o-ring sealed (800A).
 PLUNGER: FR52 (UL 94V-0) (800C).
 SWITCH SUPPORT: Brass, tin plated.
 TERMINAL SEAL: Epoxy.

Specifications and Dimensions subject to change

If your preferred product configuration is not shown, please contact our sales representative for custom design.

HOW TO ORDER SYSTEM



Series 800A/C

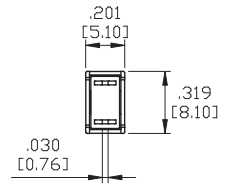
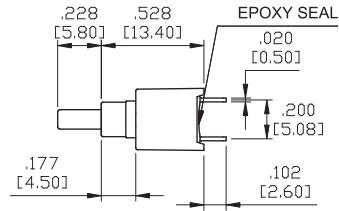
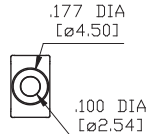
(Sealed) Sub-Miniature Pushbutton Switches

SPST



Model No.	Type	
WSP-9	OFF	MOM

Schematic

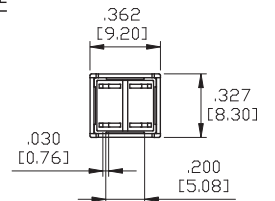
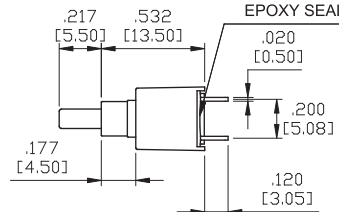
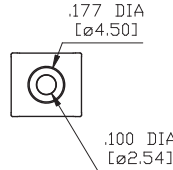
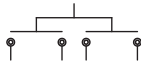


DPST



Model No.	Type	
WDP-9	OFF	MOM

Schematic

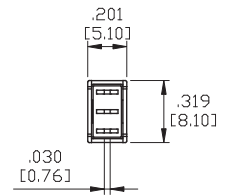
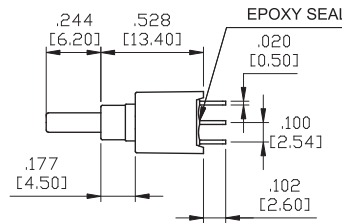
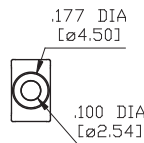
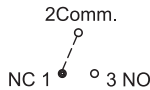


SPDT



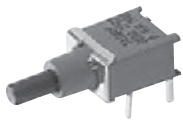
Model No.	Type	
WSP-8	ON	MOM
Term. Comm.	2-1	2-3

Schematic

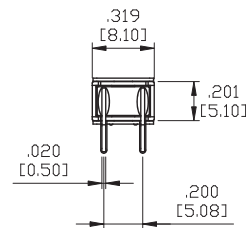
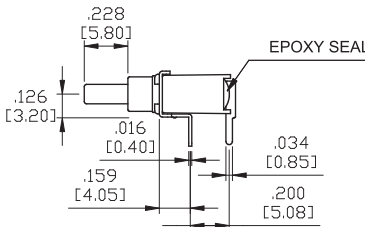
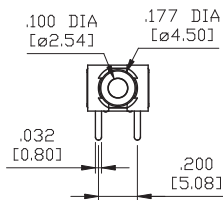


TERMINATION OPTIONS

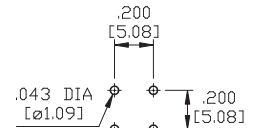
M6



SPST



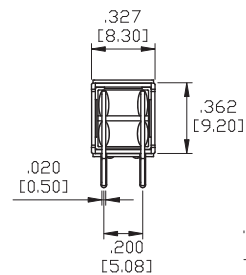
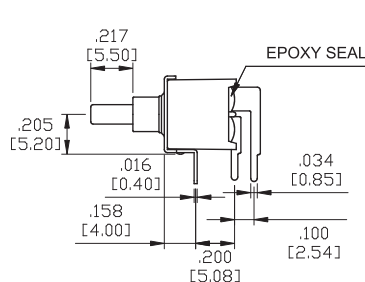
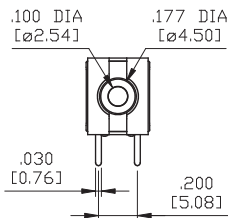
P.C.MOUNTING



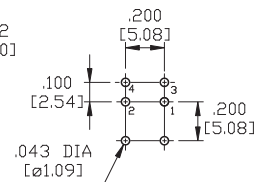
M6



DPST



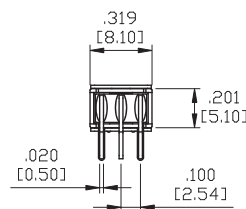
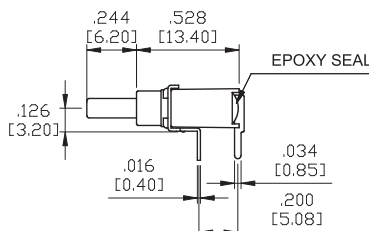
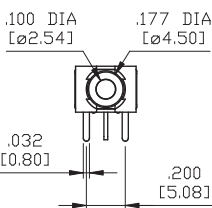
P.C.MOUNTING



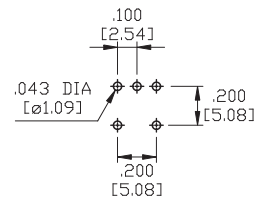
M6



SPDT



P.C.MOUNTING

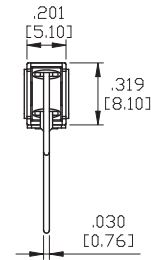
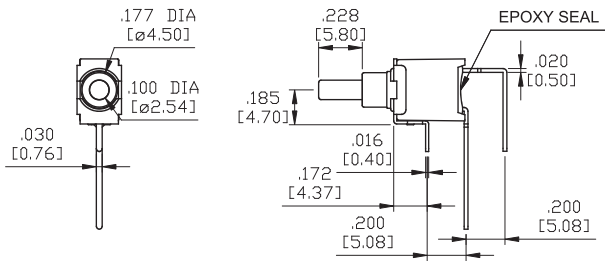


TERMINATION OPTIONS

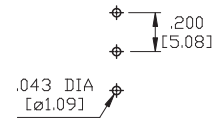
M7



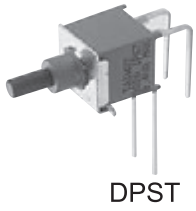
SPST



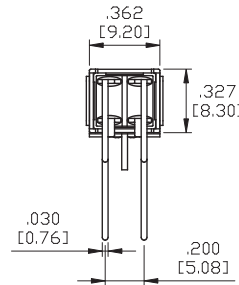
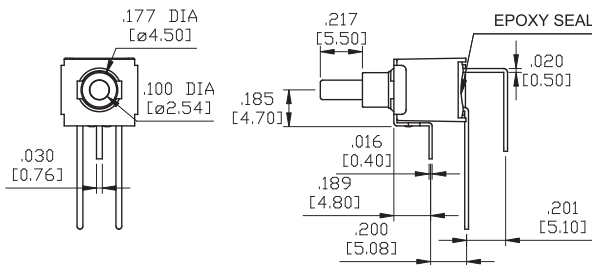
P.C.MOUNTING



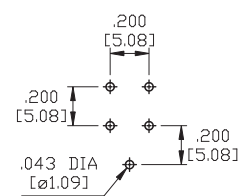
M7



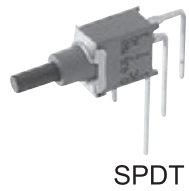
DPST



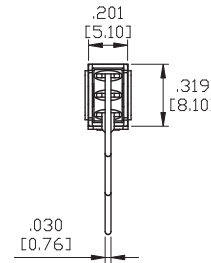
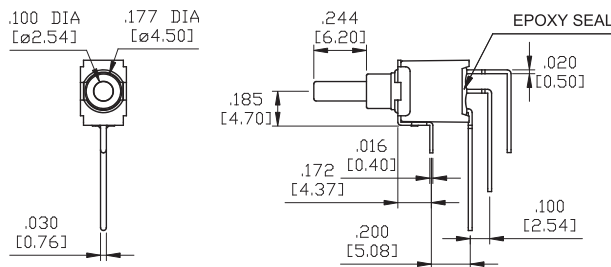
P.C.MOUNTING



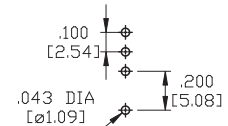
M7



SPDT



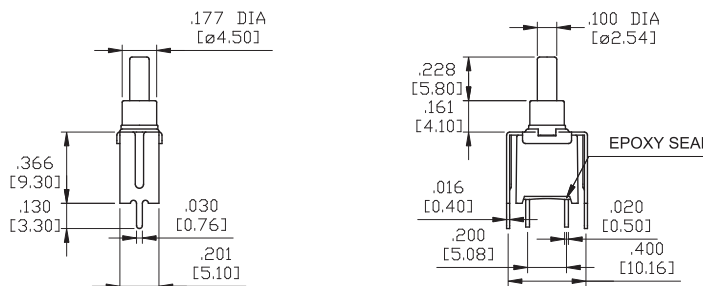
P.C.MOUNTING



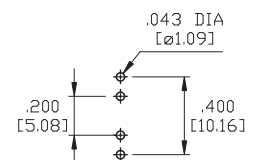
VS-2



SPST



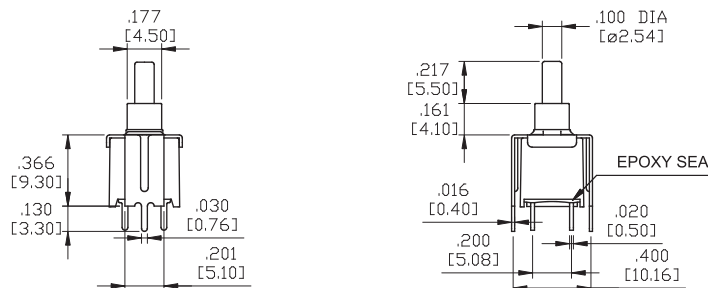
P.C.MOUNTING



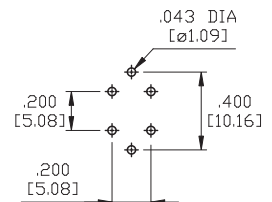
VS-2



DPST



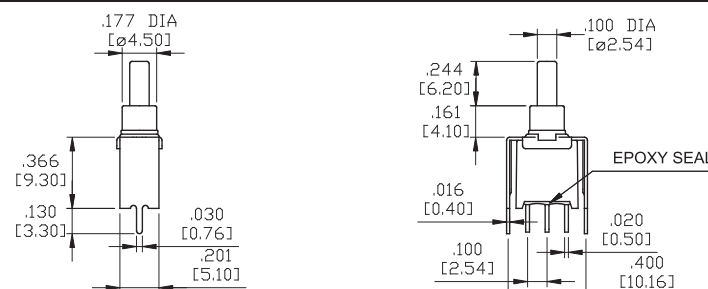
P.C.MOUNTING



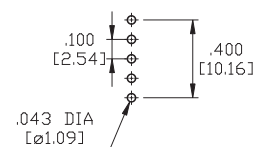
VS2



SPDT



P.C.MOUNTING

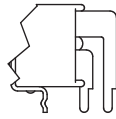
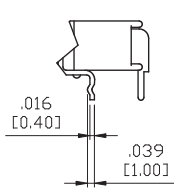


Toggle
Rocker
Slide
Pushbutton
AV
Rotary
Tact
Touch Key
Miscellaneous

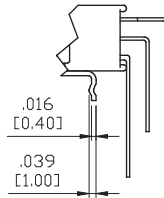
Series 800A/C (Sealed) Sub-Miniature Pushbutton Switches

SNAP-IN TERMINATION OPTIONS

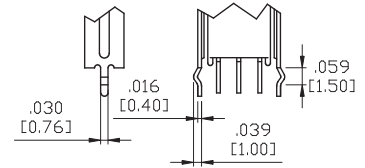
M61



M71



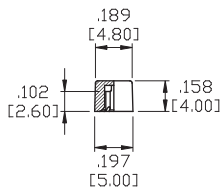
VS21



* PC Mounting for M61,M71,VS21 refer to M6,M7,VS2 respectively.

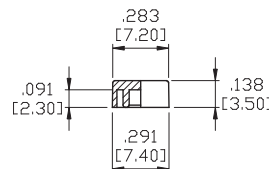
PLUNGER CAPS

C1



* MATERIAL: ABS.

C2



* MATERIAL: ABS.

CAP COLORS			
1	White	6	Green
2	Black	7	Blue
3	Red	8	Brown
4	Orange	9	Gray
5	Yellow		

CONTACT MATERIAL OPTIONS

Coding	Contact Material	Terminal Plating	Rating	Agency Approvals
G	Silver ¹	Gold over silver ³	1Amps @ 125VAC or 28VDC	IP67
P		Tin plated ⁵ ⁷		
R	Gold ²	Gold plated ⁴	0.4VA max @ 20V max (AC or DC)	IP67
K		Tin plated ⁵ ⁶		

* Standard G plating for sealed product.

1. Movable Contact: Copper alloy, silver plated.
2. Movable Contact: Copper alloy with gold plated over nickel plated.
3. Terminals: Silver plated with outer layer in gold plating.
4. Terminals: Copper alloy, with gold plated over nickel plated.
5. Outer Terminals: Copper alloy with pure tin plated.
6. Terminal Contact: Gold plated over nickel plated.
7. Terminal Contact: Palladium nickel alloy (or Silver) plated.

* IP67 protection for 800A series only.