

SPECIFICATIONS:

CONTACT RATING: Refer to "Contact Material Options" for more info.
 ELECTRICAL LIFE: 50,000 make-and-break cycles at full load.
 CONTACT RESISTANCE: 10mΩ max. initial @ 2-4VDC.
 100mA for both silver and gold plated contacts.
 INSULATION RESISTANCE: 1,000MΩ min.
 DIELECTRIC STRENGTHS: 1,500V RMS @ sea level.
 OPERATING TEMPERATURE:-30°C to +85°C.

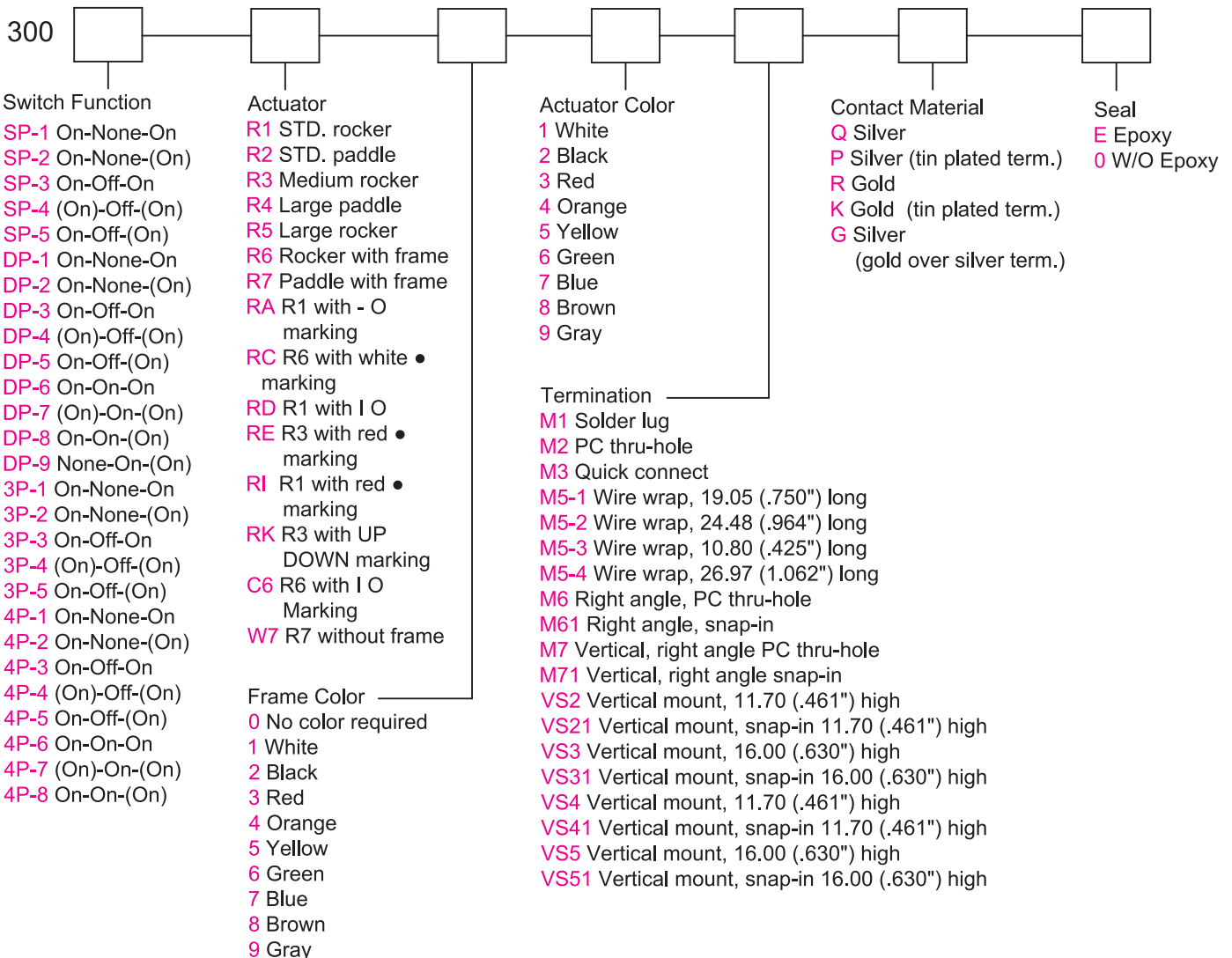
MATERIALS:

CASE: Diallyl phthalate(DAP)(UL 94V-0).
 ROCKERS: Nylon 6/6 or ABS.
 BUSHING: Zinc, nickel plated.
 HOUSING: Stainless steel.
 FRONT/REAR MOUNTING: Stainless steel.
 SWITCH SUPPORT: Brass, tin plated.
 TERMINAL SEAL: Epoxy.

Specifications and Dimensions subject to change

If your preferred product configuration is not shown, please contact our sales representative for custom design.

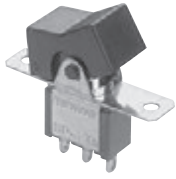
HOW TO ORDER SYSTEM



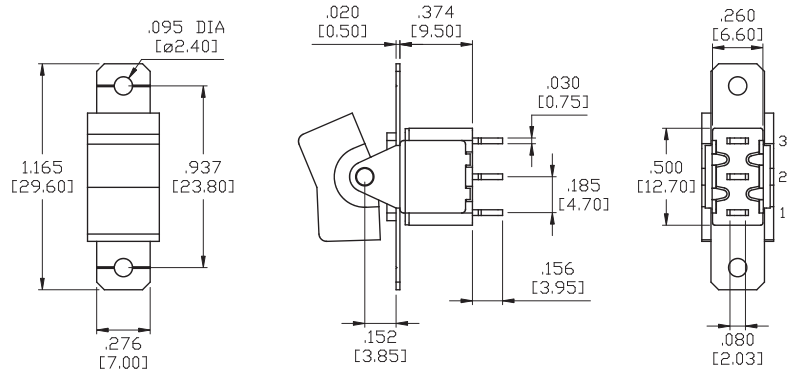
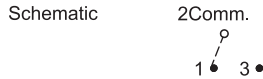
Series 300

Miniature Rocker & Paddle Switches

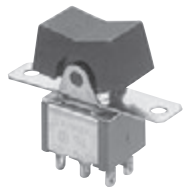
SPDT



Model No.	Switching Position		
SP-1	ON	NONE	ON
SP-2	ON	NONE	(ON)
SP-3	ON	OFF	ON
SP-4	(ON)	OFF	(ON)
SP-5	ON	OFF	(ON)
Term. Comm.	2-3	OPEN	2-1

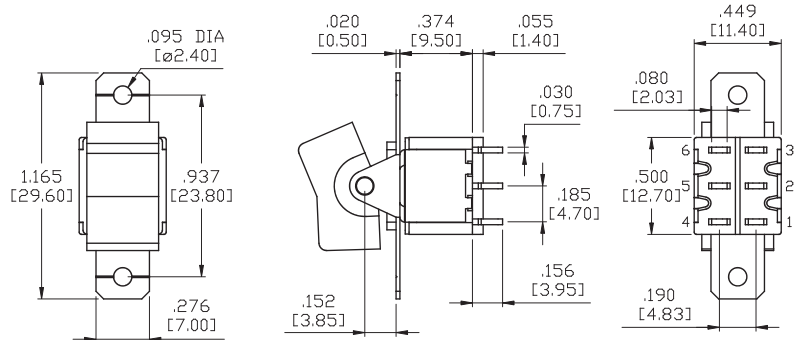
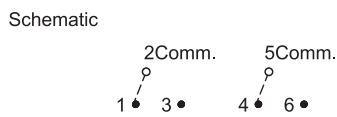


DPDT

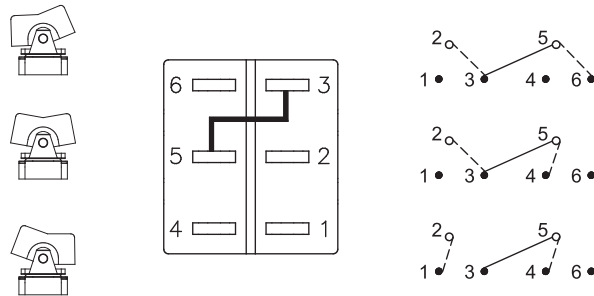


Model No.	Switching Position		
DP-1	ON	NONE	ON
DP-2	ON	NONE	(ON)
DP-3	ON	OFF	ON
DP-4	(ON)	OFF	(ON)
DP-5	ON	OFF	(ON)
Term. Comm.	2-3,5-6	OPEN	2-1,5-4

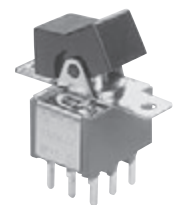
Model No.	Switching Position		
DP-6	ON	ON	ON
DP-7	(ON)	ON	(ON)
DP-8	ON	ON	(ON)
DP-9	OFF	ON	(ON)
Term. Comm.	2-3,5-6	2-3,5-4	2-1,5-4



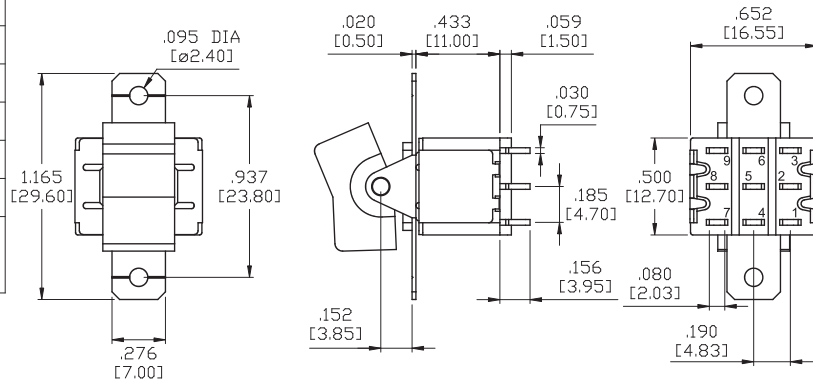
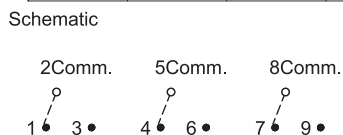
WIRING FOR ON-ON-ON (3-WAY) FUNCTION



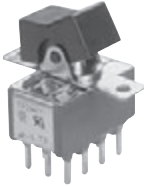
3PDT



Model No.	Switching Position		
3P-1	ON	NONE	ON
3P-2	ON	NONE	(ON)
3P-3	ON	OFF	ON
3P-4	(ON)	OFF	(ON)
3P-5	ON	OFF	(ON)
Term. Comm.	2-3,5-6 8-9	OPEN	2-1,5-4 8-7

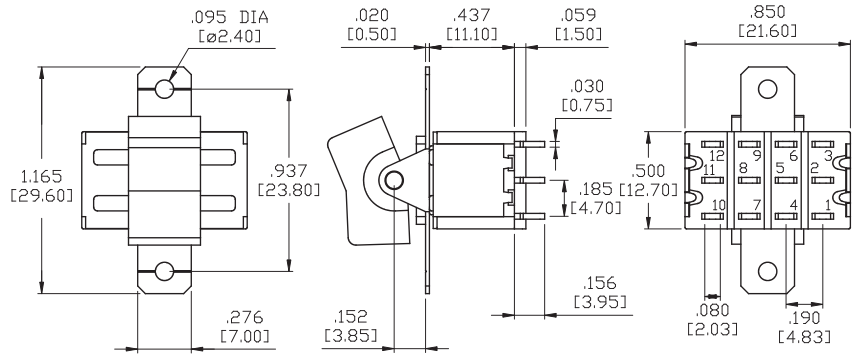


4PDT

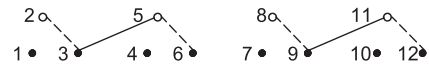
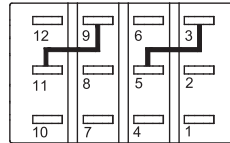


Model No.	Switching Position		
4P-1	ON	NONE	ON
4P-2	ON	NONE	(ON)
4P-3	ON	OFF	ON
4P-4	(ON)	OFF	(ON)
4P-5	ON	OFF	(ON)
Term. Comm.	2-3,5-6 8-9, 11-12	OPEN	2-1,5-4 8-7, 11-10

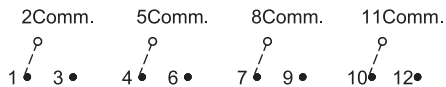
Model No.	Switching Position		
4P-6	ON	ON	ON
4P-7	(ON)	ON	(ON)
4P-8	ON	ON	(ON)
4P-9	OFF	ON	(ON)
Term. Comm.	2-3,5-6 8-9, 11-12	2-3,5-4 8-9, 11-10	2-1,5-4 8-7, 11-10



WIRING FOR ON-ON-ON (3-WAY) FUNCTION

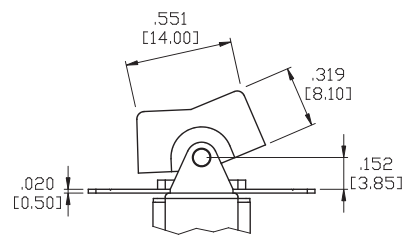
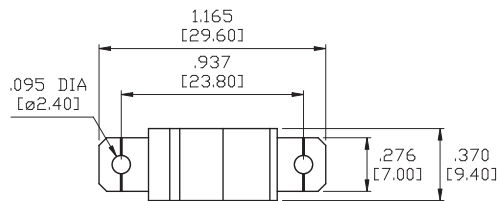
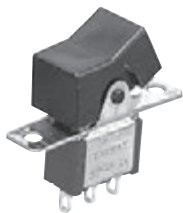


Schematic

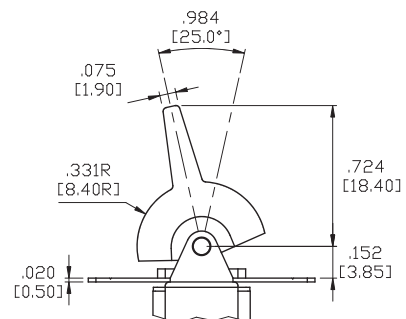
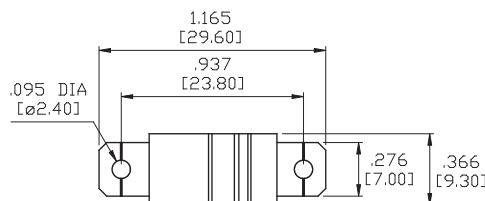


ACTUATOR OPTIONS FOR PANEL REAR MOUNT

R1

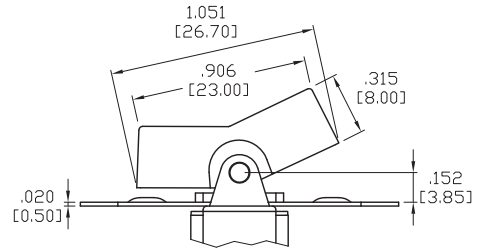
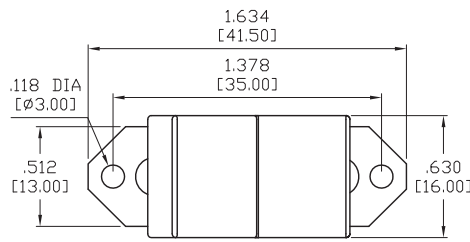


R2

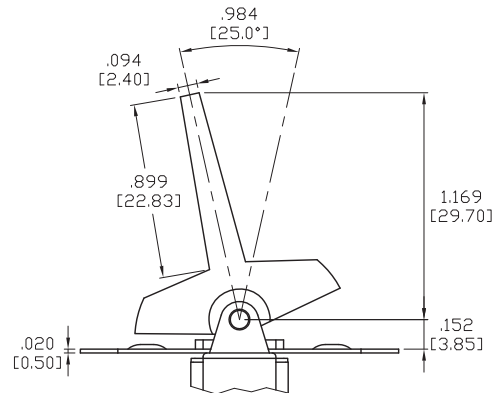
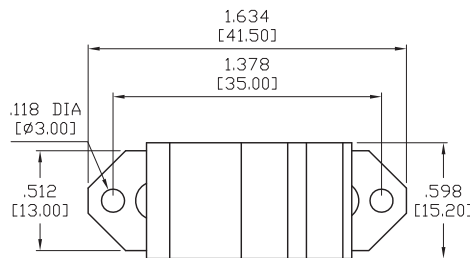


ACTUATOR OPTIONS FOR PANEL REAR MOUNT

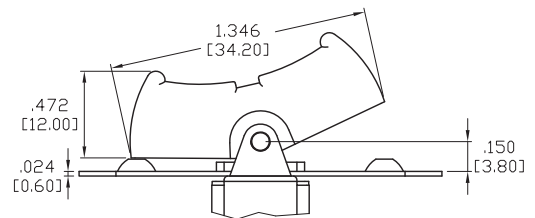
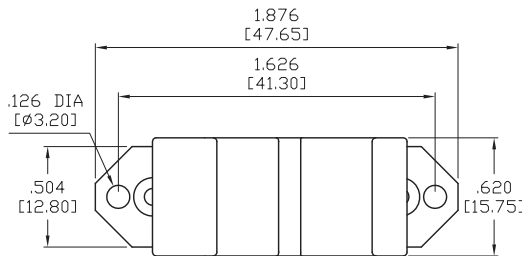
R3



R4

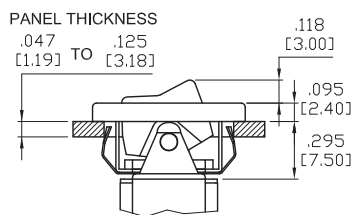
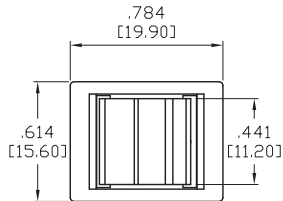


R5

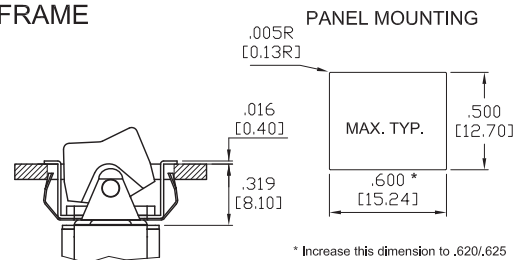
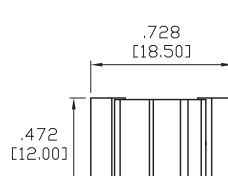


ACTUATOR OPTIONS FOR SNAP-IN FRONT MOUNT

R6

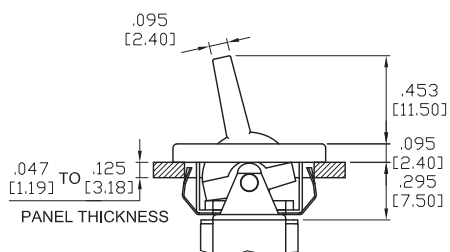
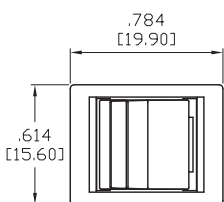


R6 WITHOUT FRAME

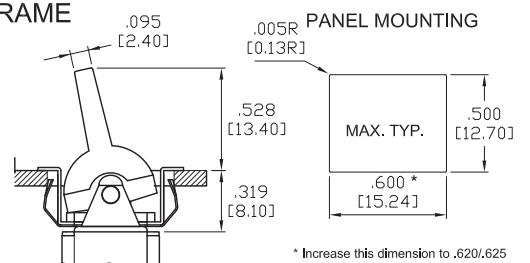
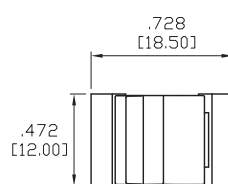


* Increase this dimension to .620/.625 [15.75/15.88] for .091/.125 [2.31/3.18] thk. panels.

R7



R7 WITHOUT FRAME



* Increase this dimension to .620/.625 [15.75/15.88] for .091/.125 [2.31/3.18] thk. panels.

Toggle

Rocker

Slide

Pushbutton

AV

Rotary

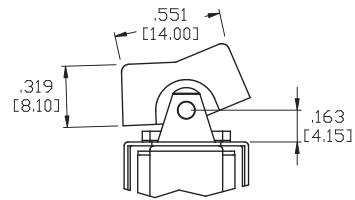
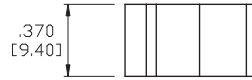
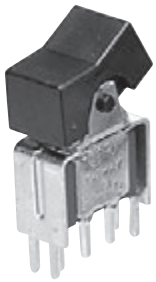
Tact

Touch Key

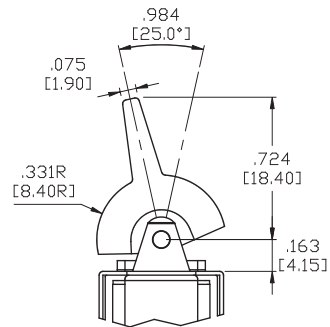
Miscellaneous

ACTUATOR OPTIONS FOR P.C. MOUNT

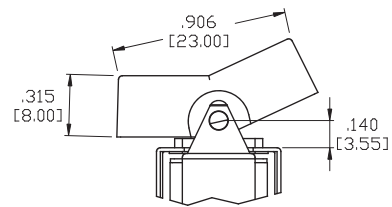
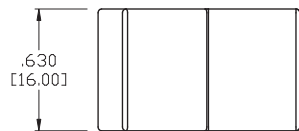
R1



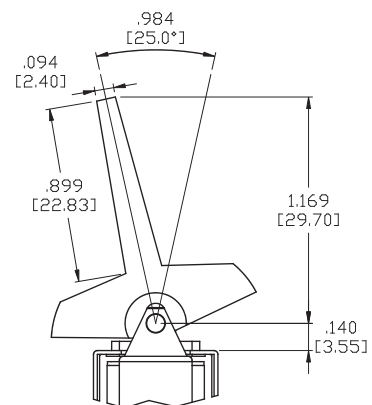
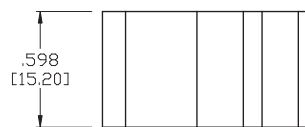
R2



R3

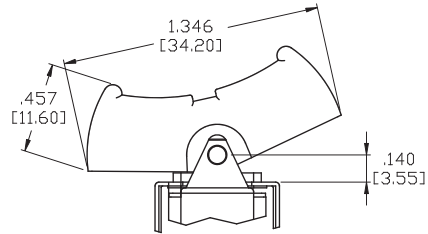
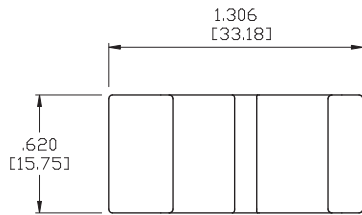
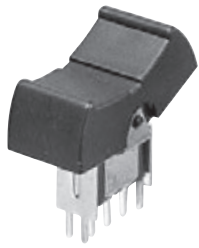


R4

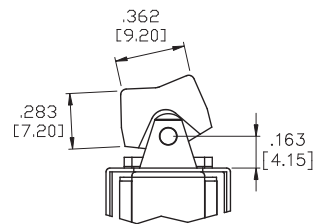
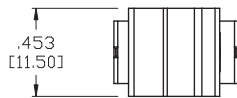
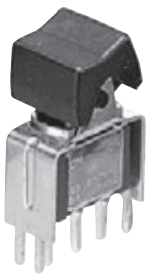


ACTUATOR OPTIONS FOR P.C. MOUNT

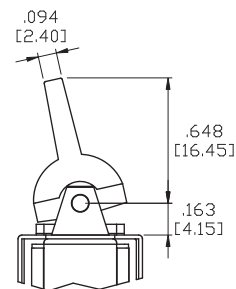
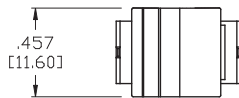
R5



R6

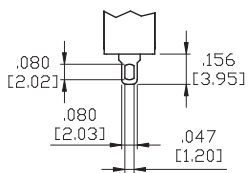


R7



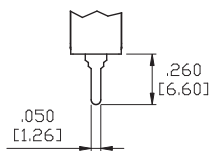
TERMINATION OPTIONS

M1 STD. SOLDER LUG



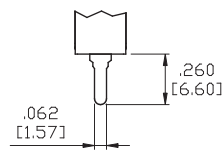
THK .030 [0.75]

M2 PC THRU-HOLE



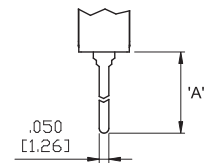
THK .030 [0.75]

M3 QUICK CONNECT



THK .030 [0.75]

M5 WIRE WRAP



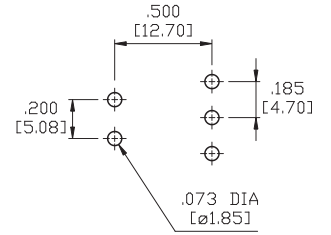
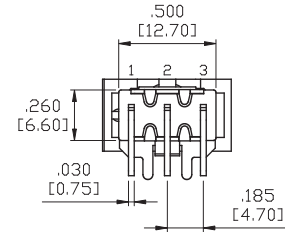
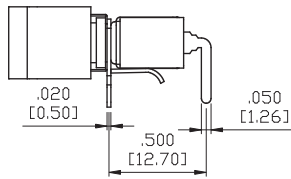
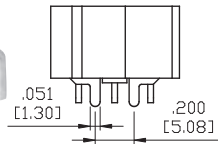
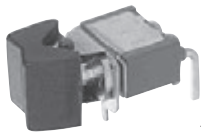
THK .030 [0.75]

OPTION CODE	DIM.'A'
M5-1	.750 [19.05]
M5-2	.964 [24.48]
M5-3	.425 [10.80]
M5-4	1.062 [26.97]

TERMINATION OPTIONS

M6

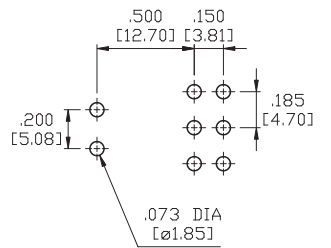
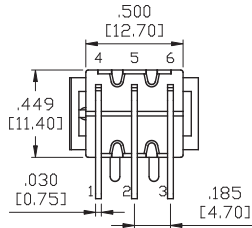
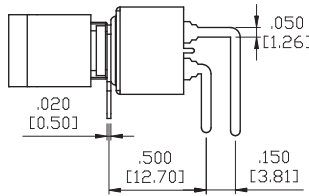
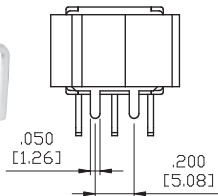
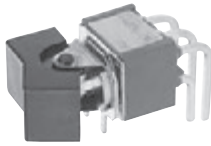
P.C.MOUNTING



SPDT

M6

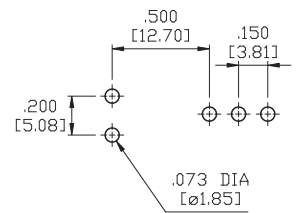
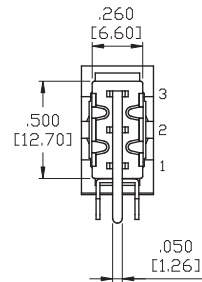
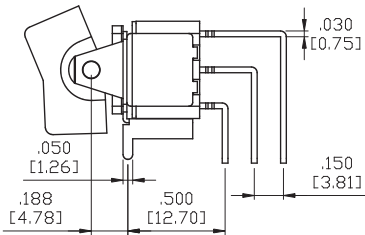
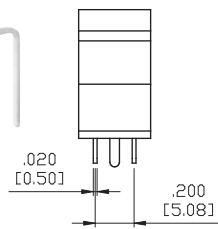
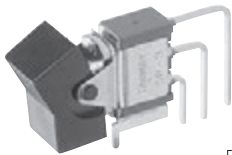
P.C.MOUNTING



DPDT

M7

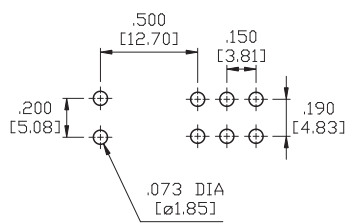
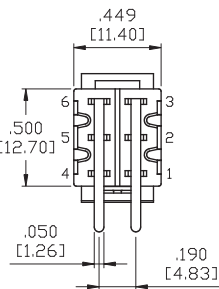
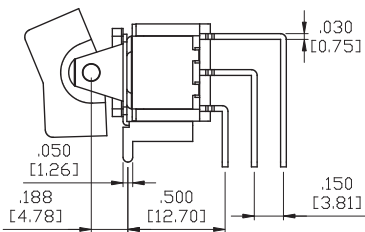
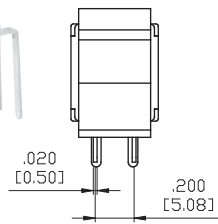
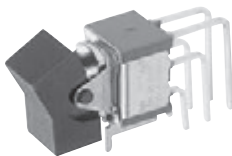
P.C.MOUNTING



SPDT

M7

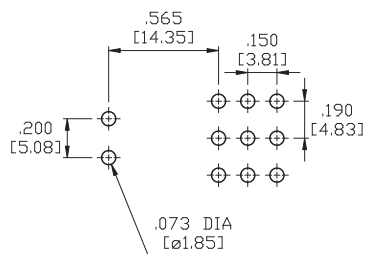
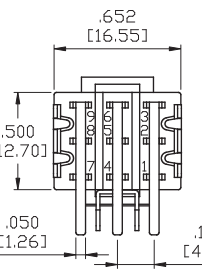
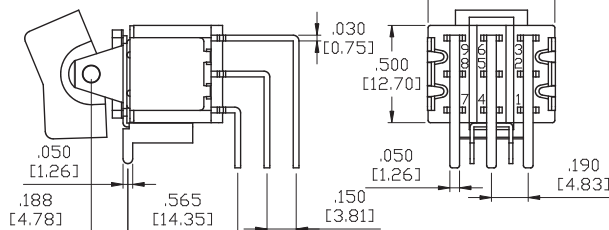
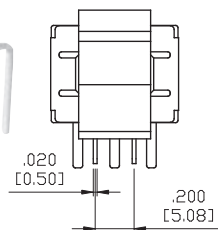
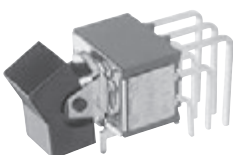
P.C.MOUNTING



DPDT

M7

P.C.MOUNTING

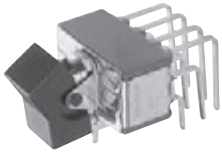


3PDT

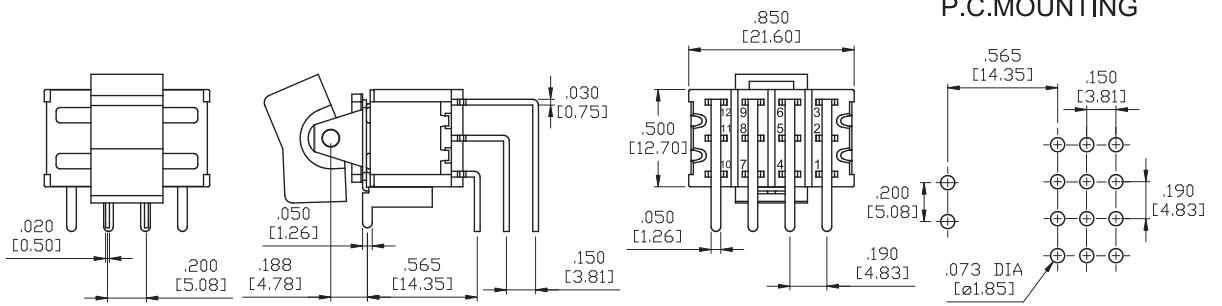
TERMINATION OPTIONS

Toggle
Rocker
Slide
Pushbutton
AV
Rotary
Tact
Touch Key
Miscellaneous

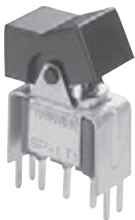
M7



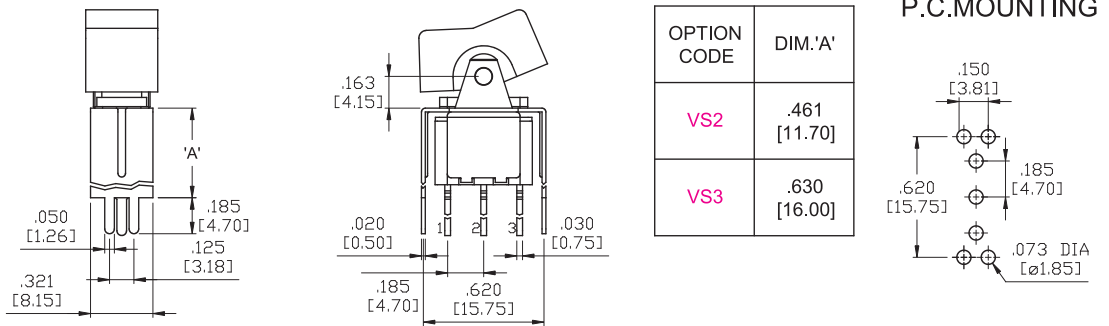
4PDT



VS2-VS3



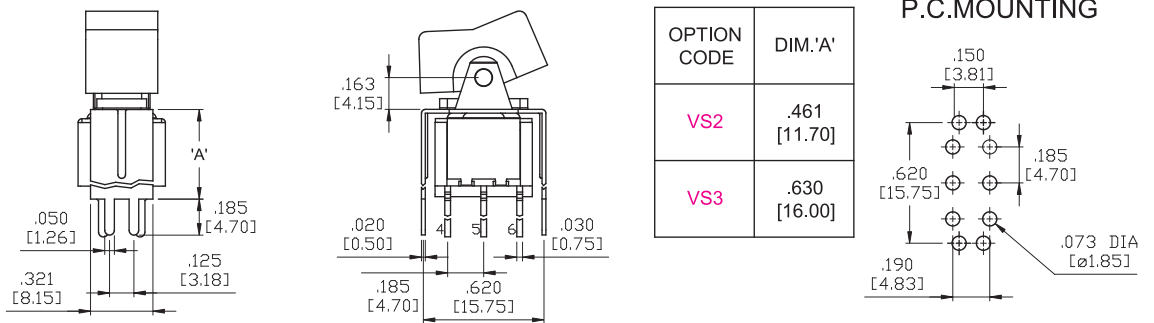
SPDT



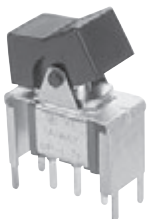
VS2-VS3



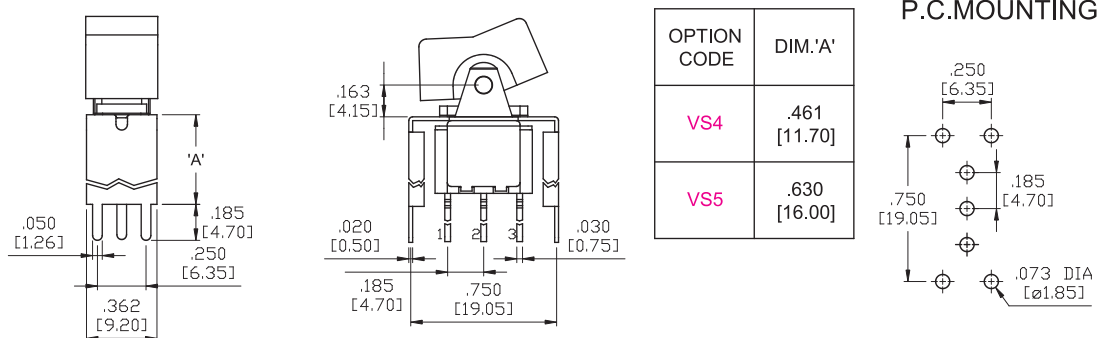
DPDT



VS4-VS5



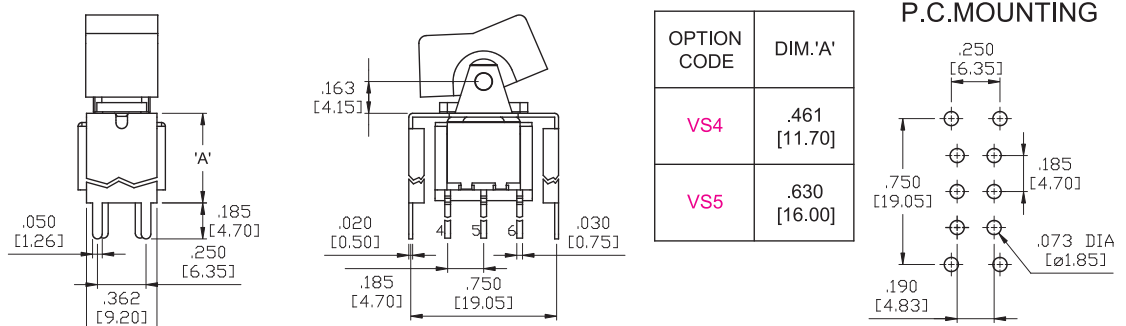
SPDT



VS4-VS5

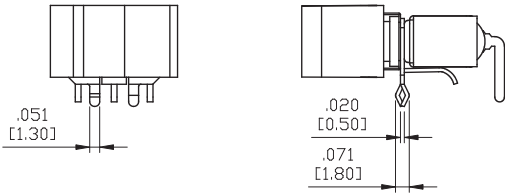


DPDT

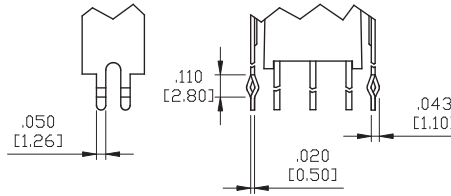


SNAP-IN TERMINATION OPTIONS

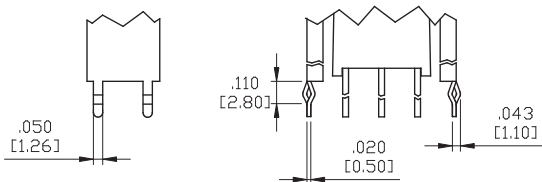
M61



VS21,VS31





VS41,VS51



* PC Mounting for M61,VS21,VS31,VS41,VS51 refer to M6,VS2,VS3,VS4,VS5 respectively.

CONTACT MATERIAL OPTIONS

Coding	Contact Material	Terminal Plating	Rating	Agency Approvals
Q	Silver ¹	Silver plated ¹	5Amps @ 125VAC or 28VDC 2Amps @ 250VAC	
P		Tin plated ⁵ / ₇		
R	Gold ²	Gold plated ⁴	0.4VA max @ 20V max (AC or DC)	
K		Tin plated ⁵ / ₆		
G	Silver ¹	Gold over silver ³	5Amps @ 125VAC or 28VDC 2Amps @ 250VAC	

1. Movable Contact / Terminals: Copper alloy, silver plated.
2. Movable Contact: Copper alloy with gold plated over nickel plated.
3. Terminals: Silver plated with outer layer in gold plating.
4. Terminals: Copper alloy, with gold plated over nickel plated.
5. Outer Terminals: Copper alloy with pure tin plated.
6. Terminal Contact: Gold plated over nickel plated.
7. Terminal Contact: Palladium nickel alloy (or Silver) plated.

* P, K not available with M1 and M3 terminals

* 6Amps (Movable Contact: coin silver, silver plated) available to model ON-NONE-ON without UL approval