

SPECIFICATIONS:

CONTACT RATING: 16A 125/250VAC.
 ELECTRICAL LIFE: 10,000 cycles min. at full load.
 CONTACT RESISTANCE: Max. 300mΩ.
 INSULATION RESISTANCE: 500VDC 100M-ohms min.
 DIELECTRIC STRENGTH: 1,500VAC for 1 minute.
 OPERATING TEMPERATURE: -30°C to +85°C.

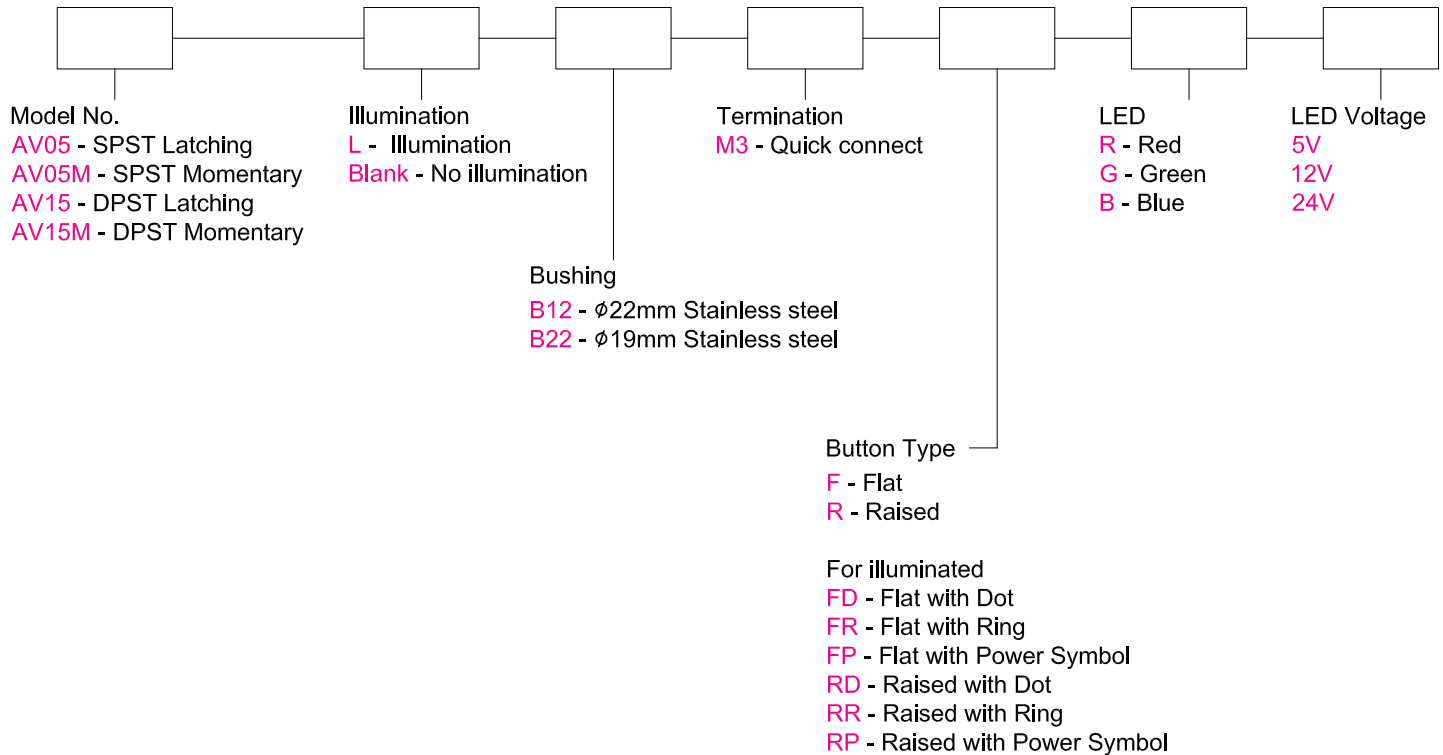
MATERIALS:

BUTTON: Stainless steel.
 BUSHING: Stainless steel with threaded bushing.
 BODY: NYLON 6/6 (UL 94V-0).
 O-RING: Silicone.
 INTERMEDIATE CONNECTOR: POM.
 ILLUMINATION PART: PC.
 CONTACT: Silver alloy.
 TERMINAL: Brass silver plated.

Specifications and Dimensions subject to change

If your preferred product configuration is not shown, please contact our sales representative for custom design.

HOW TO ORDER SYSTEM



Toggle

Rocker

Slide

Pushbutton

AV

Rotary

Tact

Touch Key

Miscellaneous

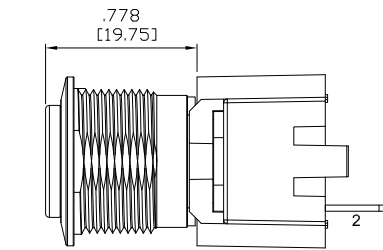
Series AVX5

Anti-Vandal Pushbutton Switches

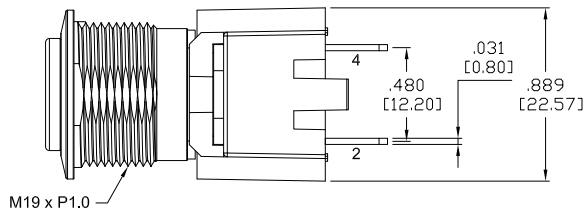
Non-latching & Latching $\varnothing 19\text{mm}$, Quick Connect

Model No.	SPST Switching Position	
AV05	OFF	ON
AV05M	OFF	MOM
Term. Comm.	OPEN	2-1

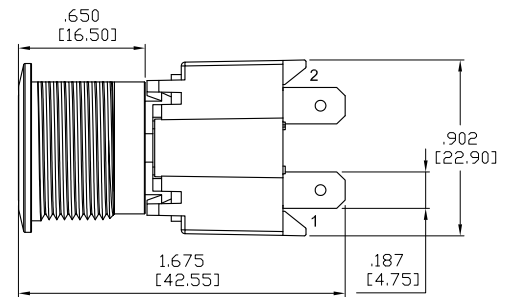
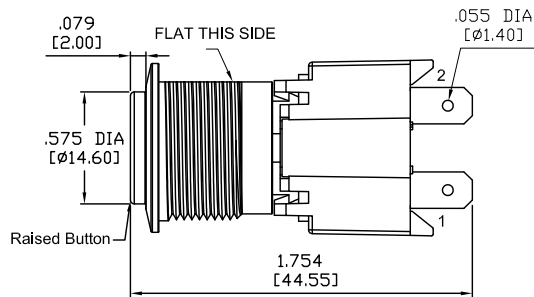
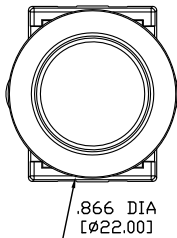
Model No.	DPST Switching Position	
AV15	OFF	ON
AV15M	OFF	MOM
Term. Comm.	OPEN	2-1, 4-3



Schematic



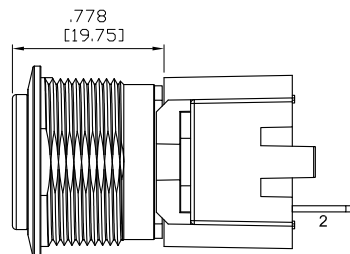
Schematic



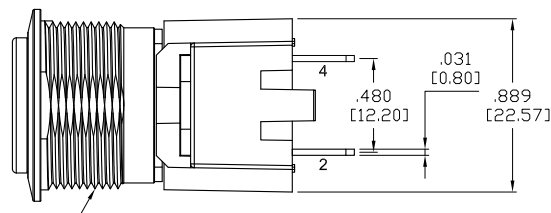
Non-latching & Latching $\varnothing 22\text{mm}$, Quick Connect

Model No.	SPST Switching Position	
AV05	OFF	ON
AV05M	OFF	MOM
Term. Comm.	OPEN	2-1

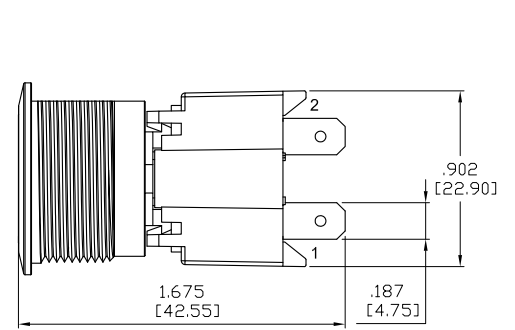
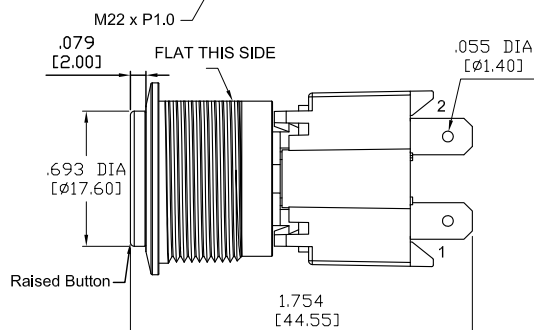
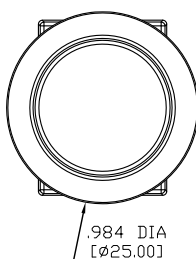
Model No.	DPST Switching Position	
AV15	OFF	ON
AV15M	OFF	MOM
Term. Comm.	OPEN	2-1, 4-3



Schematic



Schematic



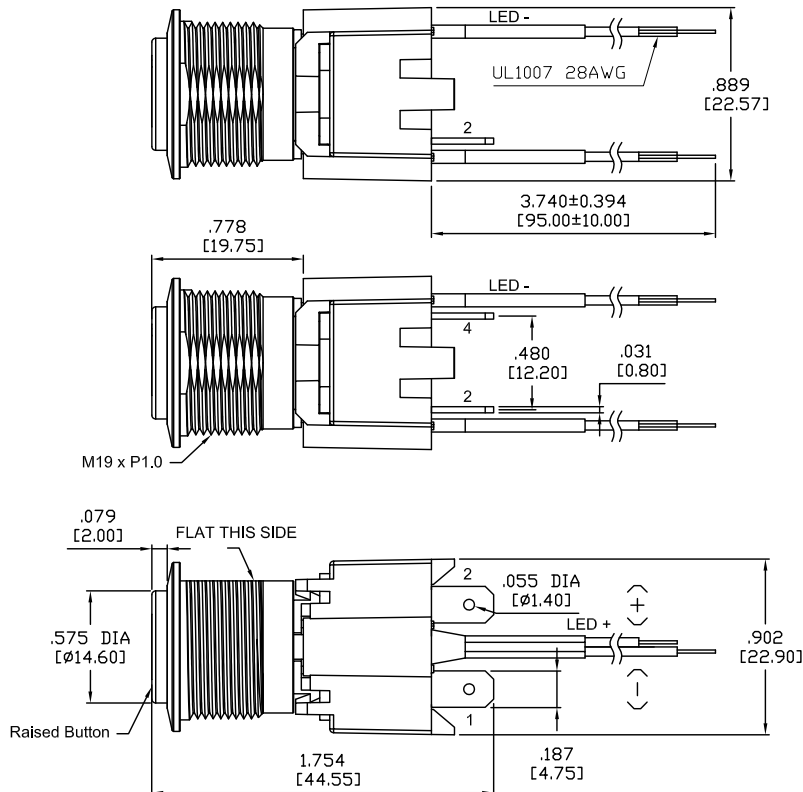
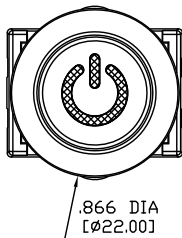
Series AVX5

Anti-Vandal Pushbutton Switches

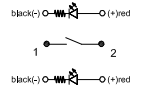
Illuminated Non-latching & Latching $\varnothing 19\text{mm}$, Quick Connect

Model No.	SPST Switching Position	
AV05	OFF	ON
AV05M	OFF	MOM
Term. Comm.	OPEN	2-1

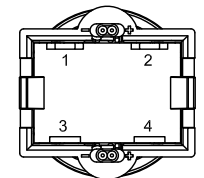
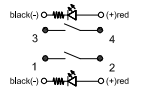
Model No.	DPST Switching Position	
AV15	OFF	ON
AV15M	OFF	MOM
Term. Comm.	OPEN	2-1, 4-3



Schematic



Schematic

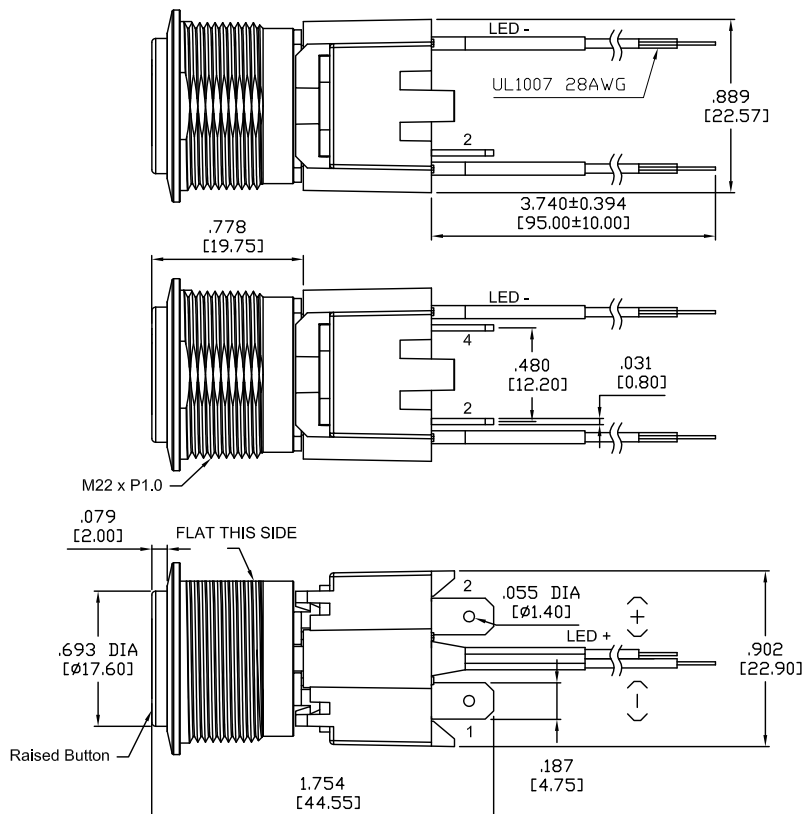
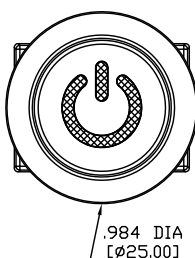


Toggle
Rocker
Slide
Pushbutton
AV

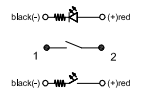
Illuminated Non-latching & Latching $\varnothing 22\text{mm}$, Quick Connect

Model No.	SPST Switching Position	
AV05	OFF	ON
AV05M	OFF	MOM
Term. Comm.	OPEN	2-1

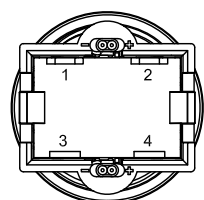
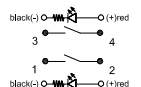
Model No.	DPST Switching Position	
AV15	OFF	ON
AV15M	OFF	MOM
Term. Comm.	OPEN	2-1, 4-3



Schematic

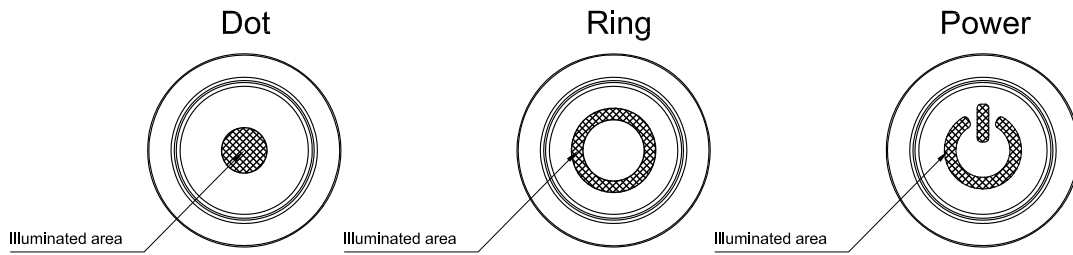


Schematic



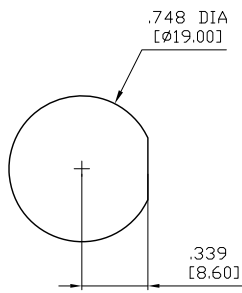
Rotary
Tact
Touch Key
Miscellaneous

BUTTON TYPE

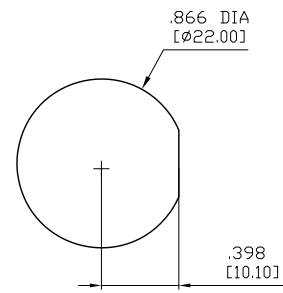


PANEL MOUNTING

M19 x 1.0 FLAT-CUT THD. BUSHING

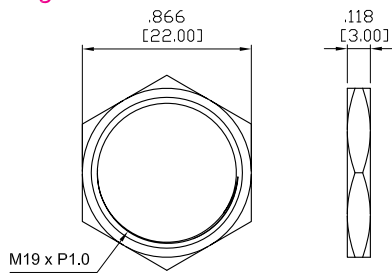


M22 x 1.0 FLAT-CUT THD. BUSHING



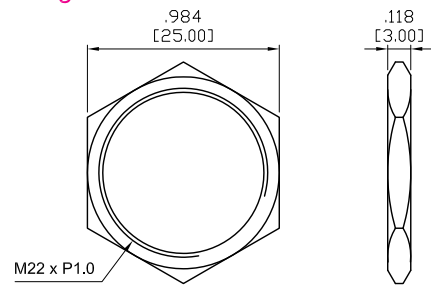
HARDWARE

M19 bushing



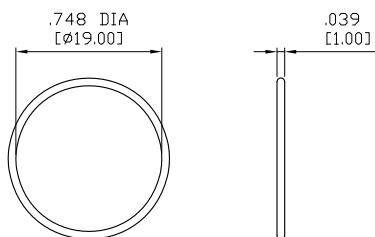
NUT

M22 bushing



O-RING

M19 bushing



M22 bushing

